

Product Overview

CQB training with Range Systems' Sim-Tact™ Simulation Shoot Houses, built for all-weather conditions, is anything but routine. These mobile, modular structures deliver dynamic, realistic environments that ensure effective preparation for real-world scenarios.

Sim-Tact™ Simulation Shoot Houses feature interchangeable building packs, allowing adaptable structures for urban training and scenario-based drills. Designed for flexibility, the shoot houses are lightweight and easy to assemble, allowing instant modifications to training environments. Adjust walls, entry points, and corridors as you go.

Whether you need a permanent facility or a rapidly deployable solution, Range Systems' mobile modular shoot houses are engineered to elevate tactical training to its highest potential. Configure, train, adapt, be prepared to any turn of events.

Features & Benefits

Ricochet Free: safe training environment

Fully Modular: easy to assemble, allows for changes throughout training

Long-Lasting: strong, withstands extreme weather conditions

Lightweight: easy to move, transport, and reinstall

Cost-Effective: withstands over 12K hits with 5.56 and over 3K hits with 9mm



Technical Specifications

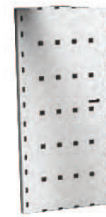
Wall Panels

- Dimensions: 6'6" High x 3'3" Wide x 6" Thickness
- Weight: 27lbs
- Ricochet-free, suitable for live fire
- Available in grey color or brick texture
- Holes for brackets, stabilizing elements, and accessories.



Door Panels

- Dimensions: 6'6" High x 3'3" Wide x 6" Thickness
- Weight: 36lbs
- Same features as the Wall Panel
- Available in grey color only



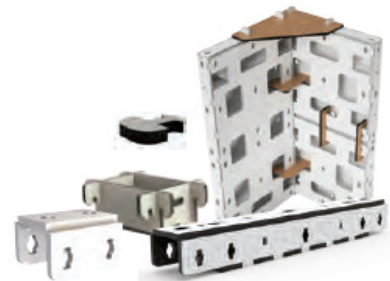
Window Panels

- Dimensions: 6'6" High x 3'3" Wide x 6" Thickness
- Weight: 27lbs
- Same features as the Wall Panel with window opening.
- Available in grey color or brick texture
- Window cover is available for greater customizability



Connecting and Stabilizing Elements

- Stability Package consisting of corners, J-hooks, and clamras.
- Connecting 'Spiders'
- Connecting Beams
- Connecting Keys



Kit Options

Reconfigure your shoot house any way you want 'on-the-go' to suit your current training needs.

Sim-Tact™ OD 40



Approx. 640sf

Kit Includes:

- 40 Wall Panels
- 4 Door Panels
- 6 Window Panels
- 6 Connecting Beams 100
- 4 Connecting Beams 200
- 10 Stabilizing 'Spider'
- 10 Connecting Corners
- 60 Connecting Clamras
- 40 J-Hook Stabilizers
- 30 Patch
- 6 Window Covers
- 6 Package 200
- 4 Door Package

Sim-Tact™ OD 80



Approx. 1760sf

Kit Includes:

- 80 Wall Panels
- 8 Door Panels
- 12 Window Panels
- 12 Connecting Beams 100
- 8 Connecting Beams 200
- 20 Stabilizing 'Spider'
- 20 Connecting Corners
- 120 Connecting Clamras
- 80 J-Hook Stabilizers
- 60 Patch
- 12 Window Covers
- 12 Package 200
- 8 Door Package

Sim-Tact™ OD 120



Approx. 2180sf

Kit Includes:

- 120 Wall Panels
- 18 Door Panels
- 12 Window Panels
- 12 Connecting Beams 100
- 18 Connecting Beams 200
- 29 Stabilizing 'Spider'
- 29 Connecting Corners
- 174 Connecting Clamras
- 116 J-Hook Stabilizers
- 87 Patch
- 12 Window Covers
- 12 Package 200
- 18 Door Package