

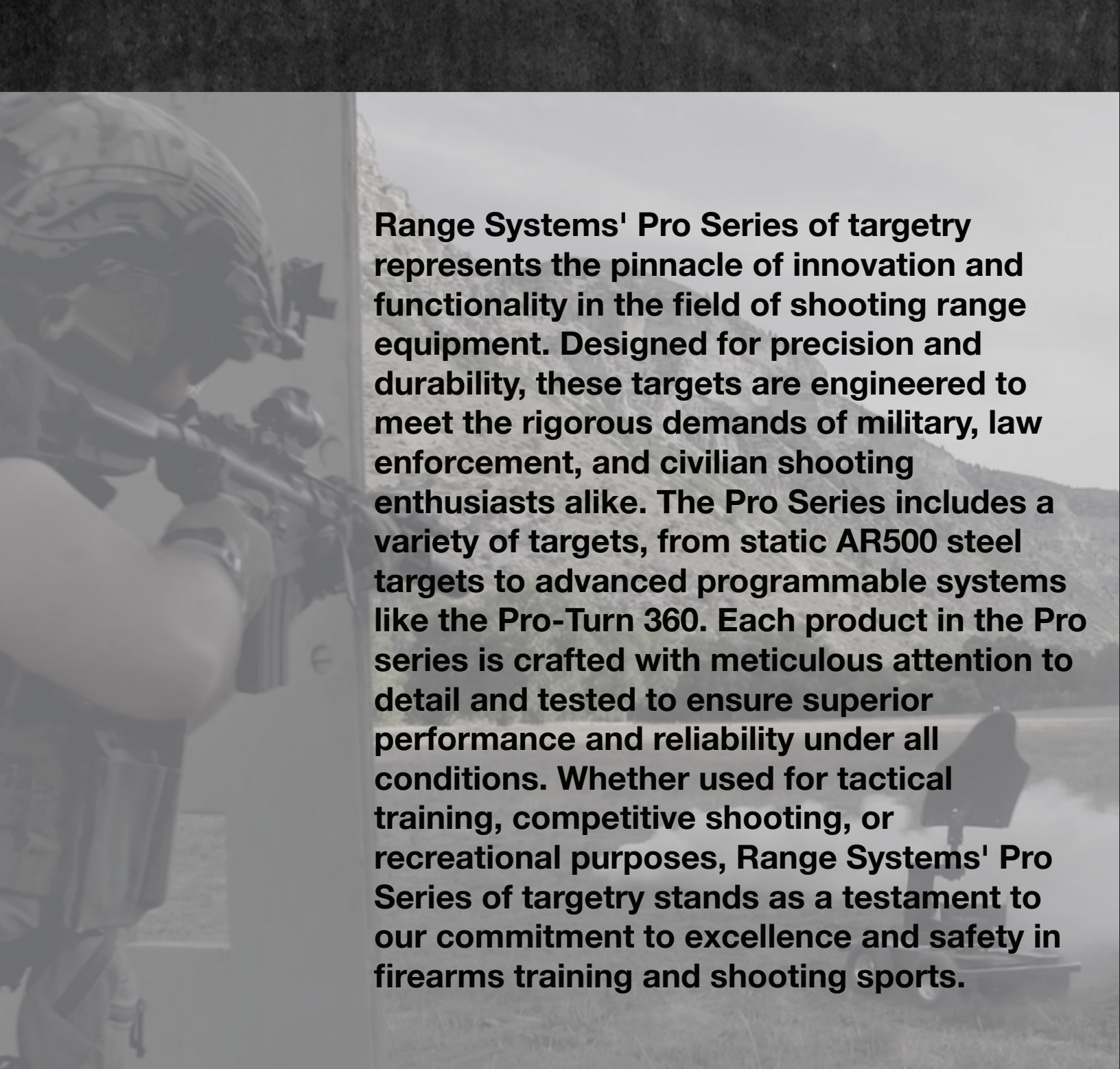
RANGE ™ SYSTEMS TARGET SYSTEMS



made in U.S.A. since 1973

(888)-999-1217

range-systems.com



Range Systems' Pro Series of targetry represents the pinnacle of innovation and functionality in the field of shooting range equipment. Designed for precision and durability, these targets are engineered to meet the rigorous demands of military, law enforcement, and civilian shooting enthusiasts alike. The Pro Series includes a variety of targets, from static AR500 steel targets to advanced programmable systems like the Pro-Turn 360. Each product in the Pro series is crafted with meticulous attention to detail and tested to ensure superior performance and reliability under all conditions. Whether used for tactical training, competitive shooting, or recreational purposes, Range Systems' Pro Series of targetry stands as a testament to our commitment to excellence and safety in firearms training and shooting sports.



range-systems.com | (888) 999-1217 | sales@range-systems.com

Pro-Turn Series

Pneumatic and Electro Mechanical Target Systems

Range Systems' Pro-Turn Series represents the pinnacle of advanced turning target solutions on the market today. Specifically designed for rigorous firearms training, the Pro-Turn series seamlessly integrates qualification exercises with tactical scenarios. Engineered for durability, these robust systems create dynamic and challenging shooting environments. With user-friendly programming via tablet interface, they effortlessly simulate new and high-stress situations at the touch

of a button. Range Systems offers a complete range of pneumatic turning targets, including cost-effective options with 90-degree or 180-degree turning capabilities. Leading the industry is the Pro-Turn 360, renowned for its reliable electro-mechanical design enabling full 360-degree turning, ideal for realistic friend/edge/foe training simulations.

	PRO-QUAL 90	PRO-TURN 90	PRO-TURN 180	PRO-TURN 360
Power	Air	Air	Air	Electro-Mech
Rotation	90° Shoot/Edge	90° Shoot/Edge	180° Shoot/Edge/ Don't Shoot	360° Shoot/Edge/ Don't Shoot
Target Capacity	Foam, Cardboard or Plastic	Foam, Cardboard or Plastic	Foam, Cardboard or Plastic	Foam, Cardboard or Plastic
Programmable	Limited	•	•	•
Hit-Sense Option				•
Individual Target Control	Ganged (3-7 targets)	•	•	•
Control Type	Pro Series or Manual	Pro Series or Manual	Pro Series or Manual	Pro Series or Manual
Wireless Option	•	•	•	•
Mounting Options	Ground or Overhead	Ground or Overhead	Ground or Overhead	Ground or Overhead

Pro-Turn 360

Electro-Mechanical Turning Target System

Building on the proven Pro-Turn foundation, the Pro-Turn 360 features Range Systems' cutting-edge technology, offering a fully programmable, hit-reactive turning target system with 360-degree rotation. This system supports comprehensive threat/non-threat scenarios and incorporates hit scoring into a single platform.

The Pro-Turn 360 is constructed from all-weather, all-steel materials, ensuring durability and reliability. It operates as a fully electric turning target system, compatible with standard 120VAC power supply and offering an optional integrated

battery backup for continuous training sessions.

Range Systems has been a leader in threat/non-threat training target systems since introducing the Duel-A-Tron®, setting benchmarks for use-of-force decision-making scenarios.

This system seamlessly integrates with Range Systems' various controller options, ranging from simple handheld devices to Android™ or Windows™ tablets, and comprehensive range control computer systems. Each controller utilizes Range Systems' user-friendly UTC™ Software, ensuring intuitive operation across all platforms.

PRO-TURN 360 FEATURES:

- Now available with optional overhead mount!
- Optional white or red/blue LED lighting
- Standard 600-meter, with optional 2,000-meter wireless range
- Friend/Edge/Foe – full radius turning capability
- Hit-reactive, counting/scoring
- Fully programmable



Pro-Turn

Pneumatic Turning Target Systems

4 OPTIONS AVAILABLE

PRO-QUAL 90

The Pro-Qual 90 is a cost-effective pneumatic live-fire turning target system, ideal for shooting ranges needing synchronized targets for practice, basic qualification, familiarization, or competition courses. It features a primary master pneumatic target actuator, which synchronizes the movement of secondary slave targets. These slave targets are connected to the primary actuator via drive rods, ensuring that all targets turn in unison.

PRO-TURN 90

The Pro-Turn 90 pneumatic target system offers individual control for each target position, with each target equipped with its own independent pneumatic cylinder. This allows the Range master to program each target to turn at varying face times and delay intervals, ensuring precise target control through independent manual switches, solid-state timing, or computer control. The user-friendly system enables targets to be sequenced individually, in series, or simultaneously with the touch of a single button.

PRO-TURN 180

The Pro-Turn 180 is a fully programmable target system offering independent control for each unit. This advanced shoot/don't shoot system enhances training scenarios by dynamically presenting targets that can turn to show their face, edge, or back.

Ideal for creating realistic and stress-inducing environments, the Pro-Turn 180 provides the flexibility to design custom training programs that meet specific needs.

PRO-TURN HD

The Pro-Turn 90HD pneumatic target system is designed for combined qualification and tactical firearms training. Developed for the United States Marine Corps, this system can display either the face or edge of the target, creating dynamic and stressful training scenarios. While it can be used for basic qualification, it is also ideal for training in high-stress, real-life situations due to its ability to be programmed for new, dynamic, and challenging cycles.





Pro-React Targets

Advanced Reactive Steel Target System

Range Systems presents the Pro-React Range, a pneumatic reactive steel live-fire target system designed for tactical firearms training. Developed for federal law enforcement and the United States military, this system can present targets in half-second increments, creating dynamic and stressful target practice that drives speed and accuracy.

The Pro-React pneumatic target system enables fully programmable individual control of each target position. The range master can program each target to present and hide autonomously at different face times, as well as at different delay times individually or synchronized. The system can be controlled wirelessly using either an Android™ or Windows™ tablet, or a stationary computer in a range control booth

or tower. Targets may be manually sequenced individually, in a series, or simultaneously at the touch of a button.

As with all of Range Systems field proven systems, all controls are based on the easy-to-use, Range Systems developed, UTC™ Software.

PRO-REACT TARGET FEATURES:

- Easily configured into a Rogers Range layout
- Pneumatic driven
- Standard 600-meter, wireless range
- 0.5s face time increments
- Hit-reactive, auto resetting ballistic steel targets
- Fully programmable

Pro-SIT Series

The Pro-SIT is a versatile, 12VDC, man-portable tactical target system available in two models. The Pro-SIT offers a pop-up only option, while the Pro-SIT 360 combines both pop-up and 360° swivel features within a single cycle. As the flagship of the Pro-SIT Series, it represents the leading edge in programmable, portable, reactive targets. Range Systems, known for pioneering shoot/don't shoot training with the Duel-A-Tron, continues to lead in use-of-force decision-making with their latest PT Series of versatile, pop-up targets.



2 OPTIONS AVAILABLE

1. The **Pro-SIT** is a radio-controlled, programmable, pop-up, hit-reactive target mechanism.
2. The **Pro-SIT 360** (shown) also incorporates 360° twist for shoot/edge/and don't shoot target positions, as well as down.

PRO-SIT FEATURES:

- Now with MILES capability!
- Hit-reactive, counting/scoring
- SITS, PITS, MITS, PITA, and JCTT options
- Fully programmable
- Reacts to all simulated munitions and airsoft
- Lightweight, can be used as portable or stationary

Pro-Sniper Series

Reactive Sniper Target

The Pro-Sniper Series, Portable (12VDC) reactive steel target system that reacts when hit and is able to automatically reset. Unlike the competition, the Pro-Sniper Series is able to be targeted while resetting. It is ideal for honing sniper and shooting skills under pressure. Elevate your performance with precise, responsive target engagement like never before.



Pro-Sniper Lite

Auto Resetting Sniper Target

A portable, reactive steel sniper target system, the Pro-Sniper offers:

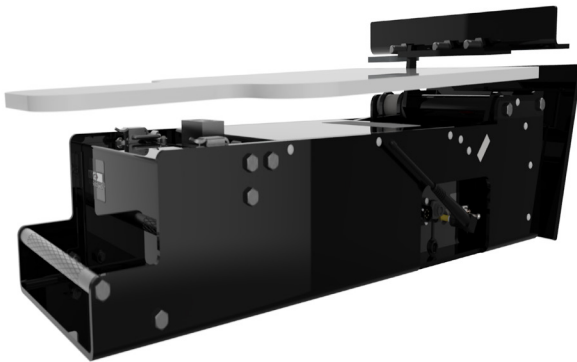
- Can be shot while resetting unlike the competition
- Low-cost, any-distance target
- Portability; can be carried by a single person
- Light weight(40 lbs.); small “footprint” (6-in. H by 6-in. W by 26-in. L)
- 3/8-in. AR500 ballistic steel silhouette target (12-in. W by 18-in. H by 3/8-in.)
- Now with 3/8-in. steel barrier to protect the lifter (14-in. W by 7 1/2-in. H by 3/8-in.)
- Auto reset feature standard; target resets itself automatically 5 seconds after each hit
- Built-in power supply; no external wires
- Simple operation; after battery connection, unit instantly becomes operational
- Available with silhouette or lollipop-style targets; other shapes available upon request
- 12VDC



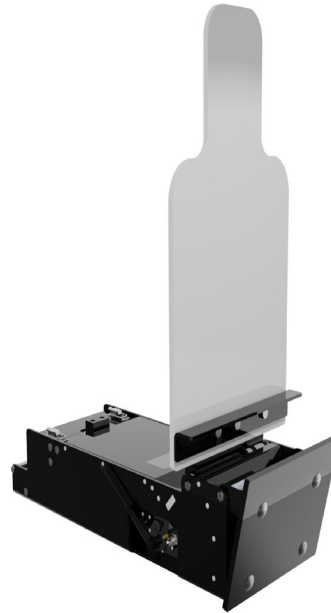
Pro-Sniper

Pro-Sniper HD

Long-Range Reactive Steel Sniper Target System



The Pro-Sniper is a portable (12VDC), programmable target lifter designed to handle AR500 plates or mannequins. It lifts targets with auto-reset functionality and allows shooters to program specific exposure times before resetting. Tailored for long-range shooting up to 600m, it offers versatile and reliable target management capabilities.



PRO-SNIPER FEATURES:

- Can be shot while resetting unlike the competition
- Man portable; compact, weighs 32 lbs. (Lifter)
- Pro-Sniper model lifts up to 50 lbs. Pro-Sniper HD lifts up to 70 lbs.
- Lifts rifle-grade steel silhouettes, bullseye plates, and Manikin Mike™ 3DHTs within 8-10 seconds
- Standard auto reset feature

Target Retrieval Systems

An overhead Target Retrieval System is a sophisticated and integral part of modern shooting range, providing significant advantages in safety, efficiency, and training effectiveness. Range Systems offers three options ensuring that you have the right tools to meet your specific training goals and budgetary considerations.

4 OPTIONS AVAILABLE

- **RS1000**
- **PRO-TOUCH**
- **PRO-TOUCH+**
- **PRO-TOUCH360**



RS1000

The RS1000 Target Retrieval System is ideal for shooters of all levels of experience. Anyone can operate it without the need for extensive training since moving the target is as easy as operating a toggle switch. Target movement and position is controlled by a manually operated bi-directional toggle switch. The user simply engages the switch to move the target carrier to the desired position. Releasing the switch decelerates the target carrier to a stop. As with anything that is located downrange, the target system is subject to being damaged from repeated hits or high caliber rounds. The modular design of the RS1000 Target System allows for quick and easy repairs in the event of damage, keeping downtime to a minimum so you can get your lane back up and running.



RS-1000 FEATURES:

- Provides reliable product performance while maintaining easy operation at an attractive price point
- Economical to operate and maintain, which maximizes efficiency
- Easy to operate toggle control which eliminates user training and reduces manpower time and cost
- Commercial off the shelf replacement parts for minimized down time. Most repairs can be done by the operator
- Optimal transport speed of 6 fps for the right balance of durability and usability
- The carrier and clamp are protected with a 3/8" AR500 steel plate

Pro-Touch Series

Until now, you've had to choose between cable-driven or wireless systems, both with their own limitations. Wireless drive units are problematic due to connection challenges leading to lane closures, lost revenue and aggravation. That's why we're proud to launch the Pro-Touch Target Retrieval System, the industry's first hybrid-driven target retrieval system.

Our innovative hybrid system combines the reliability of a protected cable for everyday out and back target movement with the advantage of wireless power in the carrier running the advanced features. This eliminates the buss bar power connection which has been a long time issue because they're hard to keep clean. The result? Unparalleled performance, minimal downtime, and maximum revenue for your range.

Pro-Touch

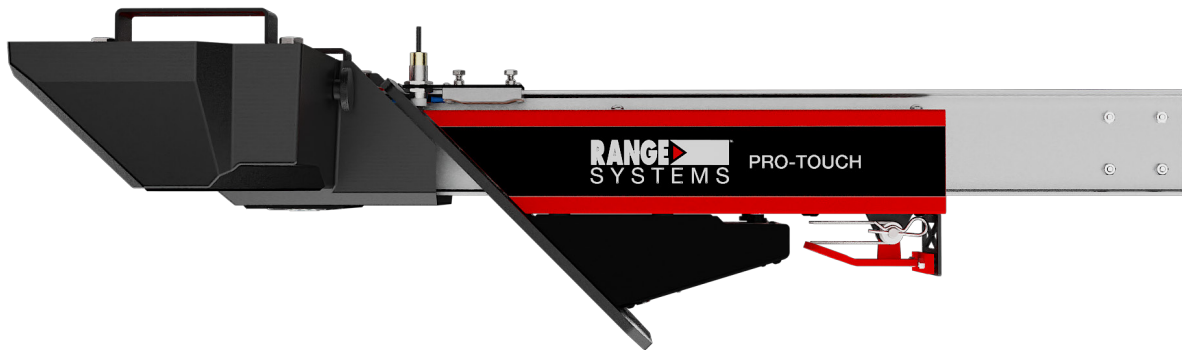


Pro-Touch is a cutting-edge target retrieval system designed for performance, precision, and ease of use. Its 10.1" touchscreen runs proprietary targeting software, providing a user-friendly and highly responsive interface. The system ensures smooth carrier movement with ramp-up and soft-stop functions, reaching speeds of up to 16 feet per second. Additional features include an overhead lane light, a one-hand target clamp, and a branded LCD screen displaying the lane number. The Pro-Touch Series is built for speed, accuracy, and adaptability.

FEATURES:

- 10.1" LCD touch panel
- Carrier ramp-up and soft-stop functions
- Carrier moves at speeds up to 16 FPS
- One hand operation target clamp
- Overhead dimmable lane lighting with white / blue / red strobe
- Built in 3.2" LCD screen with lane numbering and branding capabilities

Pro-Touch+



The Pro-Touch+ expands on the Pro-Touch system with advanced features for a more immersive training environment. It adds a target camera for instant shooter feedback, integrated target lighting, and hit and strike detection — delivering real-time data and enhanced situational awareness for high-performance training.

FEATURES:

- **Integrated target camera**
- **Dimmable target lighting with white / blue / red strobe**
- **Carrier strike detection**
- **Target hit detection**
- **Hybridrive carrier movement**
- 10.1" LCD touch panel
- Carrier ramp-up and soft-stop functions
- Carrier moves at speeds up to 16 FPS
- One hand operation target clamp
- Overhead dimmable lane lighting with white / blue / red strobe
- Built in 3.2" LCD screen with lane numbering and branding capabilities



HYBRIDRIVE

Pro-Touch360



The Pro-Touch360 is the most advanced model in the series, featuring full target turning, pre-programmed courses of fire, integrated target lighting, target camera, hit and strike detection, and an automatic target clamp — delivering a fully dynamic training experience.

FEATURES:

- **Automatic target clamp**
- **Full 360° target turning**
- **Customizable courses of fire**
- **Integrated target camera**
- **Dimmable target lighting with white / blue / red strobe**
- **Carrier strike detection**
- **Target hit detection**
- **Hybridrive carrier movement**
- 10.1" LCD touch panel
- Carrier ramp-up and soft-stop functions
- Carrier moves at speeds up to 16 FPS
- Overhead dimmable lane lighting with white / blue / red strobe
- Built in 3.2" LCD screen with lane numbering and branding capabilities



HYBRID RIVE

Pro-Touch

Control Options

Lane Control



The Pro-Touch Lane Controller is a powerful, intuitive solution for managing individual shooting lanes with precision and ease. Designed for use with the Range Systems Pro-Touch Series, this 10.1” controller allows shooters to manage lane-specific target positioning, lighting, and training programs.

Master Control



The Range Systems Pro-Touch Series Master Controller features a user-friendly 15.6” touchscreen interface, allowing range masters to manage target lanes either together or individually. It includes lighting control, preprogrammed training, and lane management timer.

Mobile Control







The Pro-Touch Mobile Controller brings advanced range management to your fingertips. Featuring a user-friendly touchscreen interface, it allows range masters to control target lanes individually or in groups, all from a mobile, flexible platform.

Pro-Bot Series

An all-terrain mover operated remotely, designed to excel across a range of training environments such as Hogan's Alleys, UACs, MOUTs, combat villages, sniper training areas, and even unimproved pathways, roadways, and slightly uneven terrain.

Robot Guide

	RENEGADE	ROVER	RANGER	ROGUE
Class	Improved Surface only	Improved Surface only	Rough Terrain	Extreme Terrain
Ground clearance	3.3-in. 	4-in. 	4-in. 	5.5-in. 
Power	4WD	2WD	4WD	4WD
Batteries (SLA)	two 9Ah	six 9Ah	six 9Ah	six 9Ah
Lithium (LiFePO ₄) Optional	•	•	•	•
Tires	10-in.	10-in.	10-in.	13-in.
Airless	•			
Base material	aluminum	steel	steel	steel
Armor (optional)		•	•	•
Stop / Stop-Drop (optional)	•	•	•	•
GPS (optional)			•	•
Track (optional)		•		

Renegade

Pro-Bot Moving Target Systems



The Renegade offers an affordable 4WD solution, operated via wireless remote control with a range extending up to 1,000 meters. It features an optional programmable Stop-Drop™ hit sensing technology, enhancing its functionality. Designed as a portable unit that conveniently fits into a car trunk, the Renegade serves as a versatile moving platform capable of replicating various human running patterns. It can operate at speeds ranging from a slow

“creep” speed of 1 ft. per second up to a maximum of 10 ft. per second. The package includes the Manikin Mike™ 3D human target, providing a comprehensive solution for dynamic training scenarios.

RENEGADE FEATURES:

- Ideal for flat or improved surfaces
- Turns 360° on its own radius for lifelike maneuverability
- Wireless variable speed control
- Standard effective range: up to 1000 meters line of sight
- Full Running Man speeds
- Multi-mission off-road/rugged terrain operation
- Lightweight all aluminum construction
- Airless tires

Ranger

Pro-Bot Moving Target Systems

The Ranger is an All-Wheel Drive Moving Target System: Your versatile solution for dynamic live-fire training in any terrain. Engineered to excel on rough terrain ranges, the Ranger empowers users with exceptional performance. Featuring speeds up to 15 feet per second, a wide 1000-meter operating range, and a robust 150-pound payload capacity, the Ranger ensures flexibility in creating highly effective training scenarios. With a battery life extending up to 4 hours (extendable with LI option), this system guarantees prolonged operational readiness for intensive training sessions.

RANGER FEATURES:

- Turns 360° on its own radius for lifelike maneuverability
- Wireless variable speed control
- Standard effective range: up to 1000 meters line of sight
- Full Running Man speeds
- Multi-mission off-road/rugged terrain operation
- High ground clearance
- Quick change battery pack
- Optional foam filled tires “run flat”



Rogue

Next Gen Pro-Bot

Range Systems introduces the Rogue Pro-Bot, the latest in its line of robotic targetry products. Designed for federal law enforcement and the US military, it stands as the ultimate moving live-fire target system for tactical firearms training.

This next-generation robot features larger tires for improved ground clearance on rough terrain, optional ballistic protection up to 7.62 caliber, GPS control, and multiple range and frequency options for operational versatility in diverse environments worldwide.

ROGUE FEATURES:

- Now with Stop/Tilt Manikin Mike™!
- Turns 360° on its own radius
- Running man speeds to 8 mph
- Quick-change batteries with optional lithium ion for extended run time
- 1000-meter line of site (LoS)
- Optional hit-reactive, Stop/Drop Manikin Mike™
- Optional GPS
- Optional foam filled tires “run flat”



Shown with
GPS and Stop/Tilt



Shown with
dual pocket holder and Army-E



Pro-Runner

Running-Man Moving Target System

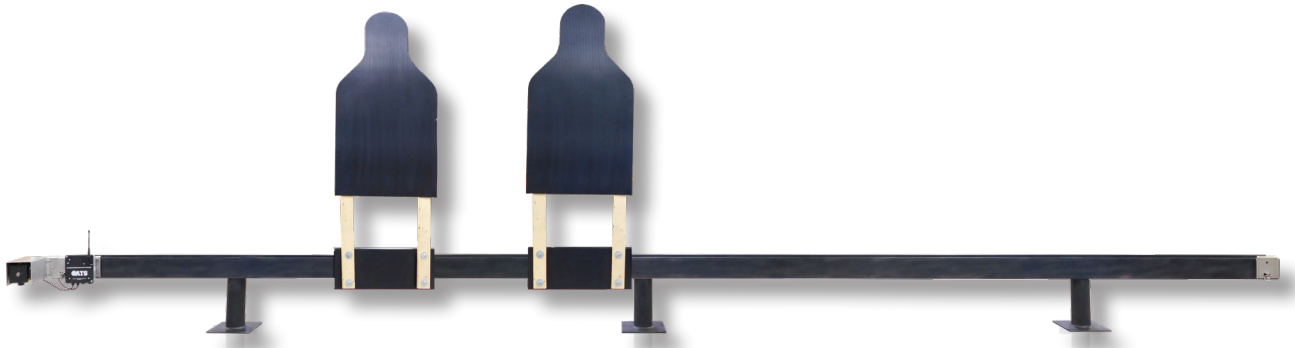
The Pro-Runner track-mounted moving target system is ideal for permanent or semi-permanent installation. It is well-suited for scenarios involving a mix of moving and static targets, such as in training environments between building facades or in simulated urban settings (e.g., Hogan's Alley).

Operating on an I-beam track, the Pro-Runner can independently control one or two moving targets, each capable of moving in different

directions and speeds simultaneously. Additionally, targets can be paired together for synchronized training exercises.

As proficiency in engaging moving targets becomes increasingly crucial for many agencies, states, cities, and counties, the Pro-Runner has set a benchmark for quality and reliability.

Maximize your team's proficiency



PRO-RUNNER FEATURES:

- Targets operate independently, forward or reverse at variable speeds or attack-retreat modes via remote control
- Operates on either 12 VDC automotive-style batteries for use in remote locations or hardwired for a permanent installation
- Can be configured as a dual setup with separate targets on each side of the rail (front and back).

ADDITIONAL OPTIONS FOR PRO-RUNNER SYSTEM:

- Wireless radio system with a range up to 600 meters
- Cable run from walls, posts or trees instead of ground-mounted rail
- Ganged target pair
- Each target rail side can have either one or two ganged targets
- All stainless-steel construction for the harshest environments

Pro-Runner Controllers

2 OPTIONS AVAILABLE



Targets

Range Systems takes pride in being the foremost manufacturer of Army-E type and IVAN Silhouette targets. Our commitment extends beyond targets; we also offer a comprehensive range of accessories to complement your target systems. With our dedication to quality and innovation, we provide everything you need to enhance your training experience and optimize your shooting proficiency.

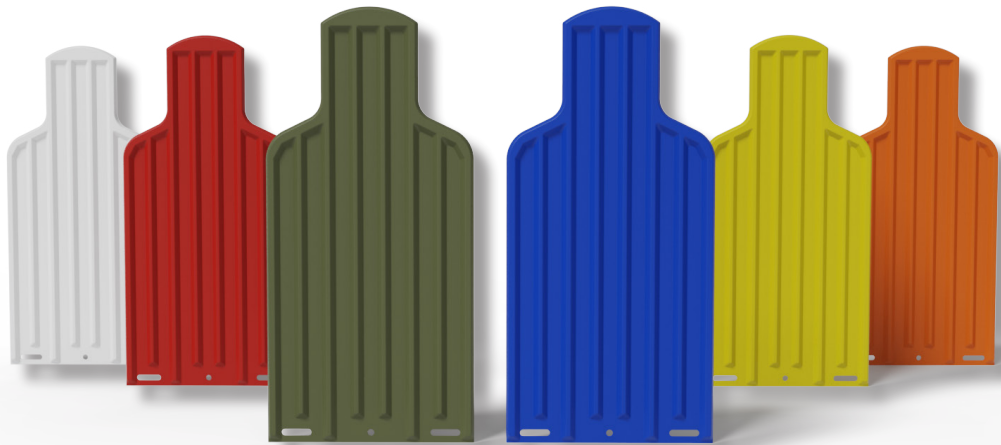


IVAN Targets

Plastic Silhouette

IVAN plastic partial 3D target silhouette. Features a common target mounting hole pattern for most Stationary Infantry Target (SIT) holders. Semi-self healing plastic prolongs life span for thousands of rounds.

Our IVAN target is available in six color variations: OD Green, Orange, Yellow, Red, White, and Blue. Made in the U.S.A. and TAA compliant.



Army-E Targets

E-Type Military Plastic Ribbed Silhouette

Range Systems is excited to introduce our E-Type Military Plastic Ribbed Silhouette, a perfect fit for your training needs. Known as the 'ARMY-E', this target backer is designed to endure thousands of rounds, thanks to its semi-self healing plastic. Plus, its thicker construction prevents warping in high temperature environments.

Our Army-E target is available in six color variations: OD Green, Orange, Yellow, Red, White, and Blue. Made in the U.S.A. and TAA compliant.

Range Systems takes pride in being the foremost manufacturer of Army-E type targets. Our commitment extends beyond targets; we also offer a comprehensive range of accessories to complement your target systems. With our dedication to quality and innovation, we provide everything you need to enhance your training experience and optimize your shooting proficiency.



Manikin Mike™

3D Target System

Developed for use in shoot houses and Urban Operations (UO) training facilities, Manikin Mike™ is a 3D human figure target designed to enhance realism in street combat training scenarios. Featuring articulated joints, a 360° swivel head, and adjustable arms and legs, Manikin Mike™ offers a heightened level of training realism. Its hands are capable of holding objects, further enhancing its practicality.

Constructed from high-density, semi self-healing plastic, Manikin Mike™ can withstand thousands of high-velocity rounds. It is resistant to temperature variations, water, and UV rays, making it suitable for various environmental conditions. Additionally, it is environmentally friendly and recyclable.

KEY FEATURES:

- Capable of being used with Range Systems hit-sensing system to make it reactive
- Options available to mount stationary, hanging (Pro Drop OH), stationary with hit-sensing drop post (Pro Drop P), or moving with stop/stop-drop (Ranger)
- 5-minute installation

Pro-Range Radio

Pro-Turn Series Wireless Controller



The target controller for Range Systems' Pro-Turn Series (Pro-Sniper, Pro-Sniper HD, Pro-SIT) of programmable, portable, pop-up, shoot/don't shoot, and reactive steel sniper target systems now features USB connectivity, back-lighting, and a range of up to 600 meters.

KEY FEATURES:

- USB connectivity to the ATS Targets' new UTC 3.0 range control software
- Windows™ and Android™ compatible
- Backlight with dedicated battery for low light and night training
- 600-meter target control range; 2,000-meter optional
- Fully programmable
- Controls up to 200 individual target systems



UTC 3.0 software



Pro-Range Control

Pro-Turn Series Wireless Controller

The Pro-Range Control is the latest target controller for Range Systems' renowned PT Series (Pro-Sniper, Pro-Sniper HD, Pro-SIT) of programmable, portable, pop-up, shoot/don't shoot, and reactive steel sniper target systems. It now includes USB connectivity, backlighting, and covers a range of up to 600 meters.

KEY FEATURES:

- Easy-to-use design
- Connects to any Android™ tablet
- Connects to any Microsoft Windows™ tablet with Range Systems UTC 3.0 software
- Connects to PC via Bluetooth™ (Samsung Galaxy™ Tab A included)
- 600-meter target control range
2,000-meter optional
- Controls up to 200 individual target systems
- 2-day battery life, rechargeable via USB port
- Operates any Range Systems Pro-Turn target system,
- Small and lightweight radio
- Fits into standard mag pouch

Ballistic Rubber

Range Safety Essentials

Range Systems Dura-Panel™ rubber composite product minimizes the hazards of ricochet and splatter, reduces airborne lead contaminants, and offers ballistic capabilities no other material can match. This product is the cornerstone of Range Systems Encapsulator™ bullet containment systems, shoot houses, baffle systems, and tactical ranges. It is also the only rubber product that has been independently tested for its ballistic performance. Don't jeopardize range safety – Be sure you are getting Dura-Panel™, the ballistic rubber preferred by the US military.

Ballistic Rubber Protection and Acoustic Systems

Range Systems Pro-Tact™ ballistic equipment packages provide the safest, cleanest, and quietest range environment in the industry. Our proprietary Dura-Panel facing adhered to AR500 steel captures and contains rounds on contact reducing ricochets and reducing noise by up to 65%.





Here are some of the ballistic protection products where we use in our Pro-Tact systems:

- Baffles
- Safety Ceiling
- Ballistic Sidewall Protection
- Shooting Lane Dividers
- Free-Standing Ballistic Shields
- Sound Abatement

OUR BALLISTIC RUBBER

Dura-Panel™

Dura-Panel™ ballistic rubber is the cornerstone of our Pro-Tact containment systems. It's the only rubber product in the industry that has been independently tested and certified for use by the US Special Forces.

Acoustic Dura-Panel™

Acoustic Dura-Panel™ has all the same great bullet encapsulation properties as our standard Dura-Panel with an increased noise reduction coefficient due to the grooves molded into the face.

Dura-Bloc™

Range Systems patented rubber composite block is designed to encapsulate ammunition up to 7.62 caliber. Its self-healing properties close the bullet's path after the round has penetrated the surface so each bullet is encapsulated inside the ballistic rubber block.

Vulcan™ Vulcanized Rubber

Vulcan™ Bullet Encapsulation Blocks, Ricochet Panels, Flooring, and Curtains are manufactured from high density vulcanized rubber material.

Knee Walls

Ballistic Range Equipment Projection

Pro-Tacts™ Knee wall system:

The Range Systems Pro-Tacts™ knee wall system offers protection for electronics, such as pop-up targets and running man systems, as well as other downrange equipment vulnerable to bullet strikes.

Constructed from 3/8" AR500 steel plate covered with 2-inch thick Dura-Panel™ ballistic rubber directly adhered to the steel, the Pro-Tacts™ knee wall system provides robust protection. Steel sheets faced with Dura-Panel™ are supported by columns with base plates anchored securely to the floor. Designed to be freestanding, this system can withstand all pistol and rifle rounds up to 7.62 caliber.

- Pro-Tacts™ safely defeats rounds and minimizes the hazards of ricochets and back splatter from bullets impacting this area of the range with the safe round encapsulation of Dura-Panel™.

Vulcan™ Knee Wall

Range Systems' Vulcan™ ballistic rubber panels, backed by AR500 steel plate, ensure personnel and equipment safety.

This fully molded material retains its shape indefinitely, eliminates backside "pop-outs," withstands direct sun exposure without deterioration, and remains unaffected by freeze/thaw cycles. Ideal for outdoor applications.

Benefits:

- Pro-Tacts™ Knee wall system is ideal for ranges that have down range ground mounted equipment that needs protection.



About Us



Range Systems has been a leader in providing advanced live fire facilities. Our team has a strong history of delivering successful projects globally, known for quality design, fabrication, and installation. We set industry standards in range safety, ballistic performance, and unique capabilities.

Every project is unique, and at Range Systems, we tailor our solutions with careful consideration and extensive experience. We collaborate closely with our customers, leveraging our resources and industry partnerships to overcome challenges and ensure project success.

Working with Range Systems means integrating us into your team. We value customer relationships and strive for collaborative success. Our flexible approach ensures you receive customized solutions that meet your specific needs. Throughout the process, we prioritize communication and guidance to ensure a partnership that delivers results.

Beyond construction, Range Systems offers a comprehensive range of supplies and accessories to support the ongoing productivity, cleanliness, and safety of your facility.

Our work is guided by core values—Passion, Integrity, Intellectual Curiosity, Productivity, Conviction, and Respect—which define our company culture and interactions with colleagues, customers, and partners.

With our experienced team of range specialists, Range Systems has designed innovative firearm training environments for diverse clients. Trust our expertise to provide tailored solutions that meet your range needs effectively.

RANGE SYSTEMS



Industry Leading Service & Support

Whether you need range upgrades, installation assistance, or service, Range Systems can help. Call us today at (888) 999-1217 to schedule a field maintenance visit.

