

USB Driver Uninstall Procedure for Windows

There are two main reasons to uninstall the USB drivers from your Windows operating system. 1) There is already a B&B USB to Serial converter installed on the Windows machine – in this case it may be necessary to uninstall the old drivers prior to installing the new device and its drivers. Keeping all of the drivers on the same version is the only way to guarantee top performance of each USB to Serial converter. 2) The other reason is to clear the system of device drivers for a product that is no longer used.

It is important to follow the steps below in the order given to insure a complete uninstall of the drivers. The first step will remove the COM port driver and the second step will remove the device driver.

Step 1 – Uninstalling the COM Port Driver

- Open Device Manager
- Plug in the older product so that the drivers appear in the listing.
- Expand the Ports (COM & LPT) tree. The USB port is listed by port type. In the example screen shot (Figure 1) the port is an RS-485 type, but may also be RS-232 or RS-422.
- Right-click on the COM port to be removed and select Uninstall.
- A “Confirm Device Uninstall” message box will appear, Click OK. For Windows Vista users, also check the box that says “Delete the driver software for this device” then click OK.

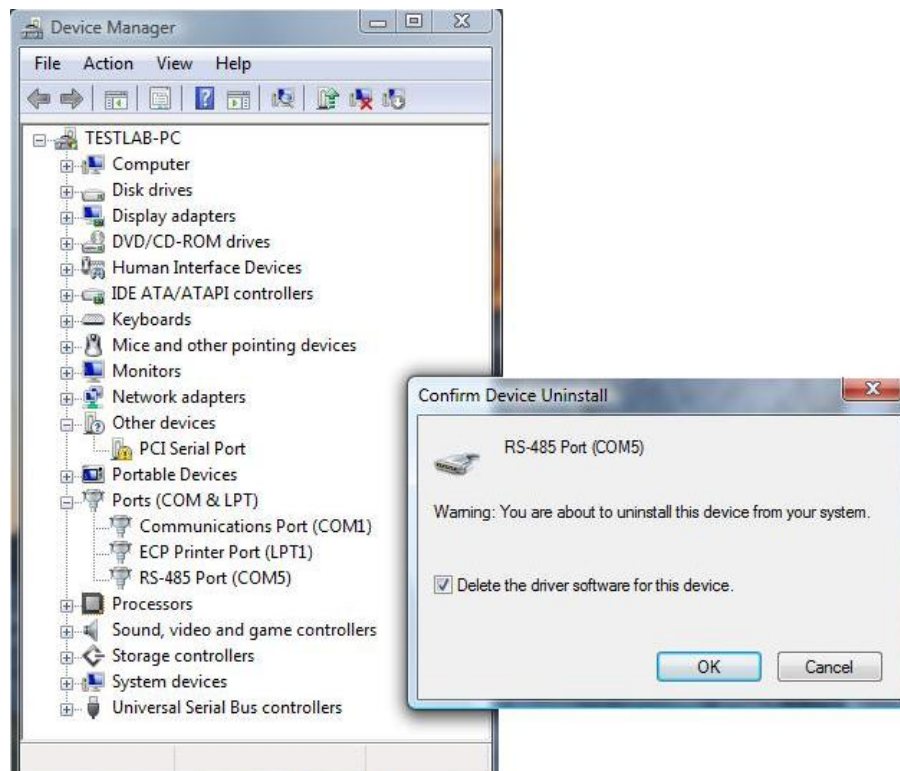


Figure 1 – Uninstall COM Port Driver
“Example screen shot above is Windows Vista”

Step 2 – Uninstalling the USB Device Driver

- Continued from Step 1
- Next, expand the Universal Serial Bus Controllers tree. The USB Converter is listed by model number. In the example screen shot (Figure 2) the model number is USPTL4, but it can be any one of several dozen different models.
- Right-click on the model to be removed and select Uninstall.
- A “Confirm Device Uninstall” message box will appear, Click OK. For Windows Vista users also check the box that says “Delete the driver software for this device” then click OK.
- The legacy driver is now uninstalled. You may proceed with the device driver installation for new products using the disk included.
- Older devices should be reinstalled using the new driver disk.

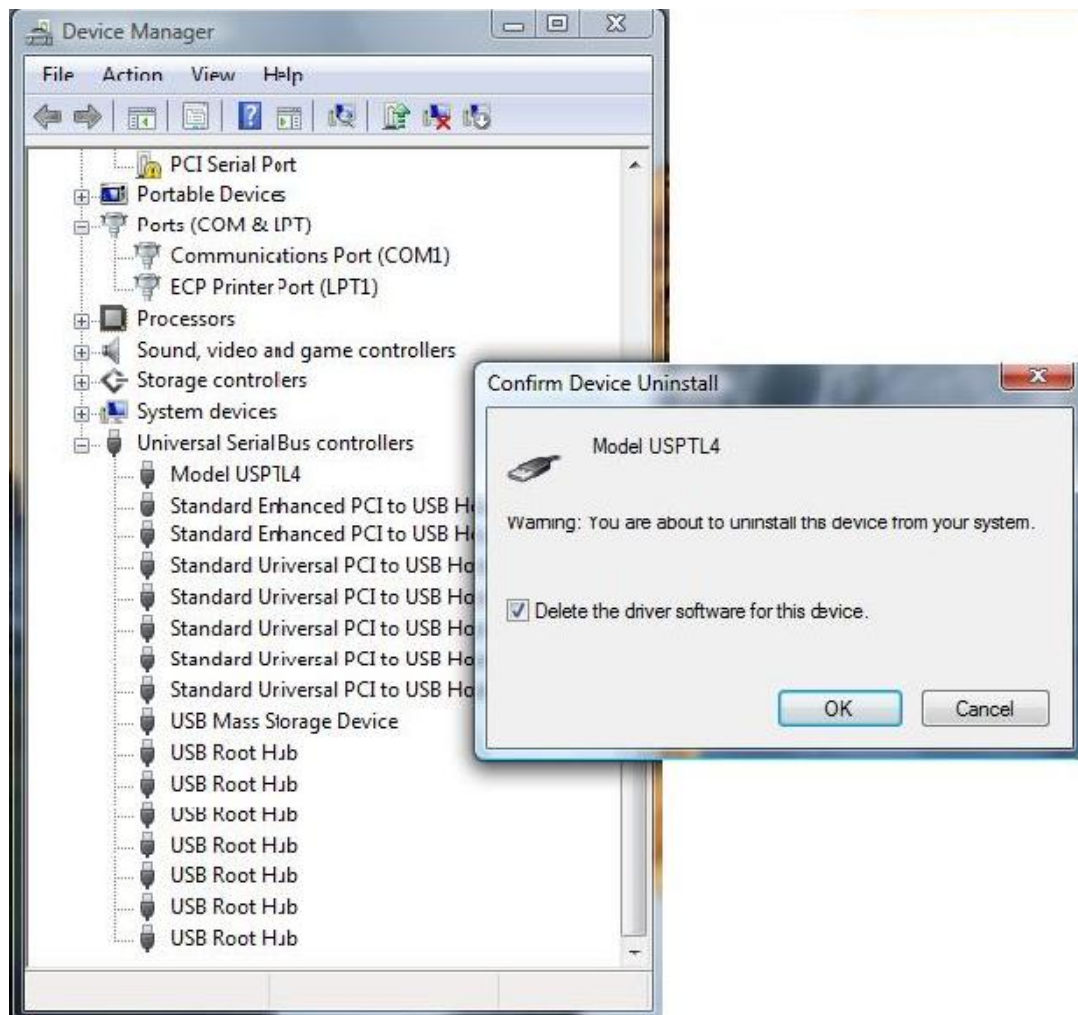


Figure 2 – Uninstall USB Driver
“Example screen shot above is Windows Vista”