

Product Overview

Range Systems Sim-Tact™ Simulation Shoot Houses can be built to your unique specifications. Any floor layout size or configuration can be accommodated, from small single rooms to large multi-room complexes. The floor layouts can then be quickly and easily reconfigured, challenging users in a manner that accurately represents what could be experienced operationally.

Each system can be easily set-up and taken-down with minimal effort (no tools/no ladders) using a patent pending bracket system and built-in user-friendly handling-grips to move the panels. The entire system can be compactly stored, moved to other locations, reconfigured or extended as needed.

Training environments can be quickly and cost-effectively built, new layouts deployed to fully challenge learners, all while providing excellent educator observation capabilities. Sim-Tact™ Shoot Houses are designed to be safely used with Simunition® or marking rounds and can be fitted with breachable windows and doors, providing a wide variety of service training scenarios.

Available in 3 standard packages,
each with endless layout options

Key Features and Benefits

- Easy, fast to set up
- Reconfigurable
- Designed and certified to be safely used with Simunition® training rounds



Technical Specifications

Standard (Solid)

- Dimensions are 7' High X 4' Wide X 4" in Thickness
- Approximately 90 lbs.
- Exterior is Medium Density Sign Board resistant to "Marking Cartridges".
- Easily cleaned
- Paintable
- Precision cut handles on exterior with baffles to prevent pass through of "Marking Cartridges"
- Precision cut top and bottom plates containing handles, holes for brackets and 4 holes to position camera and accessory brackets

Door Panel

- Dimensions are 7' High X 4' Wide X 4" in Thickness.
- Approximately 115 lbs.
- Same construction as Standard Panel.
- Solid core commercial door.
- Industrial handset
- Beveled bottom door plate for reinforcement.

Window Panel

- Dimensions are 7' High X 4' Wide X 4" in Thickness.
- Approximately 90 lbs.
- Same construction as Standard Panel with window opening.
- "Lexan" window and integrated frame to disperse energy.
- Friction fit into opening on 4 rubber corners.

Brackets

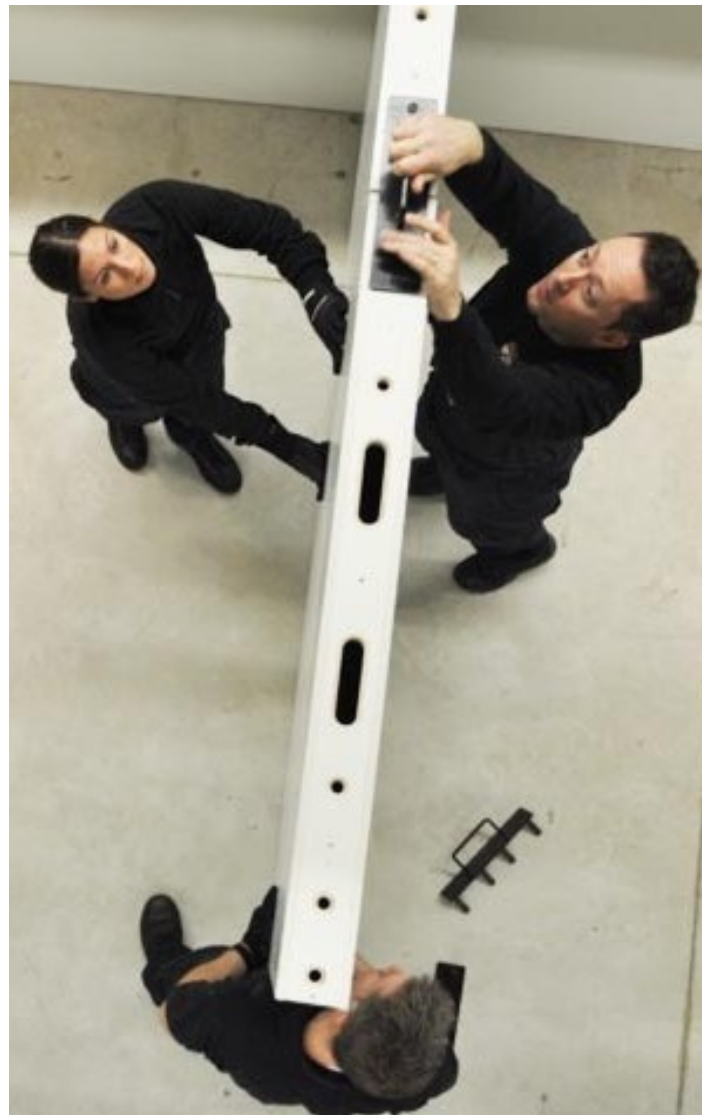
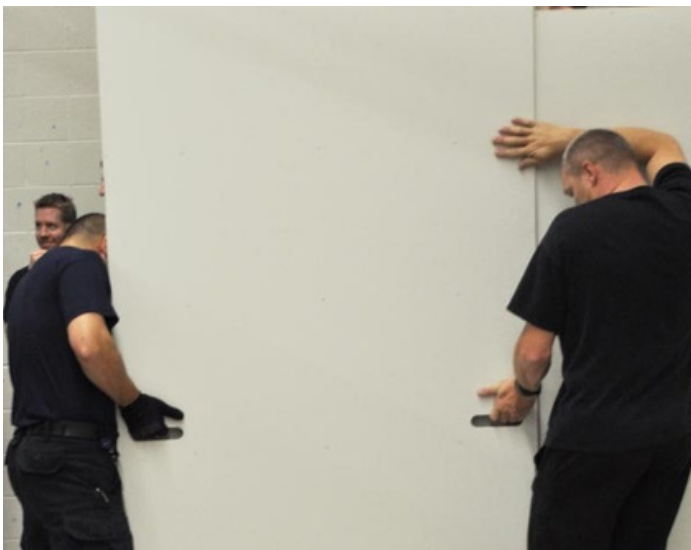
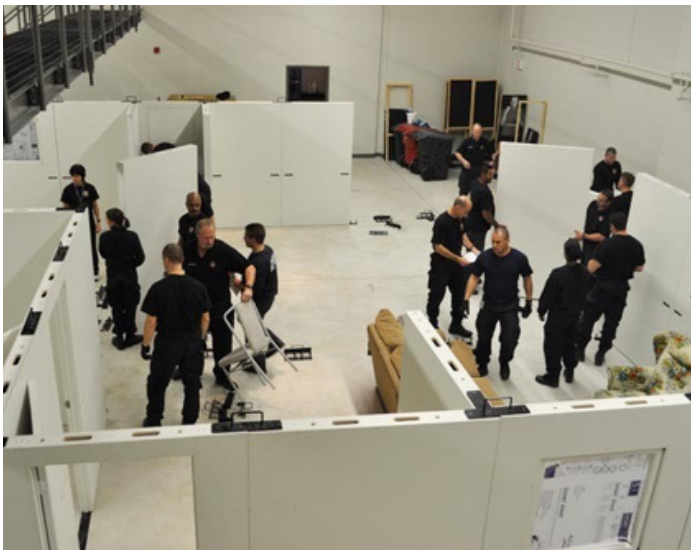
- Variety of Bracket types to ensure the capability of maximum flexibility in set-up.
- NO Tools or ladder required for set-up
- Brackets are Laser Cut Steel
- Powder Coated paint treatment
- Accessory Brackets for mounting Audio Visual equipment throughout the structure.
- Spanner brackets to create a 4' opening
- Support brackets to fortify "unattached wall"

Reconfigurable to Meet Your Training Requirements



Assembly

- ▶ Fast, no tool assembly
- ▶ 2 person set-up
- ▶ No ladder required
- ▶ Easy hand set-up
- ▶ Built-in positioning handles



Unlimited Floor Plans

- ▶ Homes
- ▶ Apartments
- ▶ Garages
- ▶ Stores
- ▶ Shopping Malls
- ▶ Industrial Buildings



Convenience Store



Bedroom with Closet

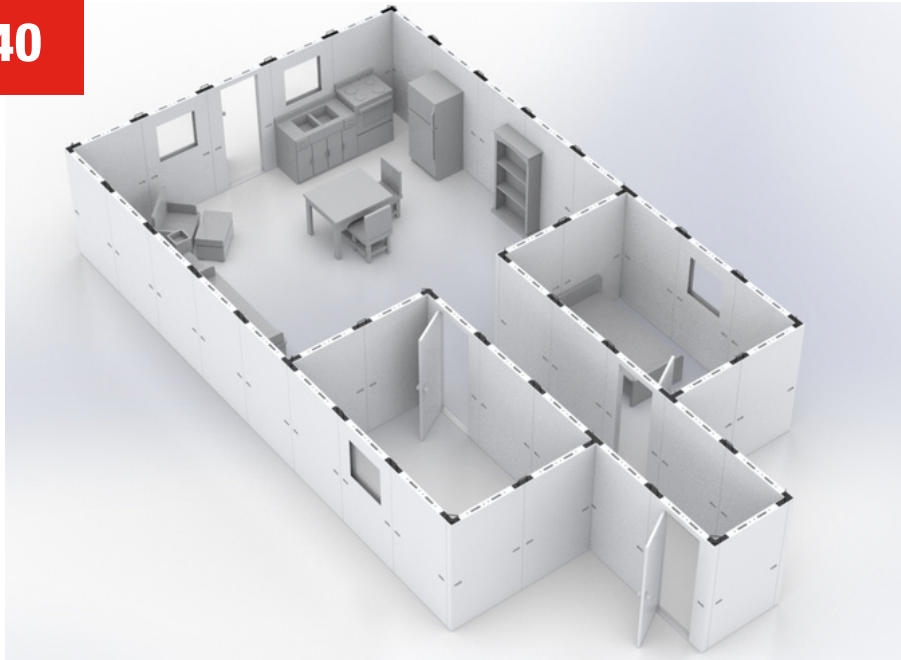


Post Office



Industrial Building

Sim-Tact™ 40

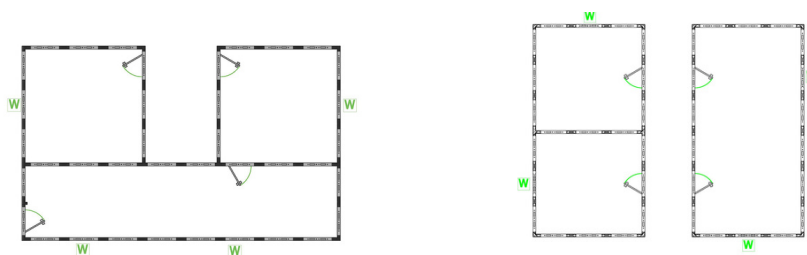


PACKAGE INCLUDES

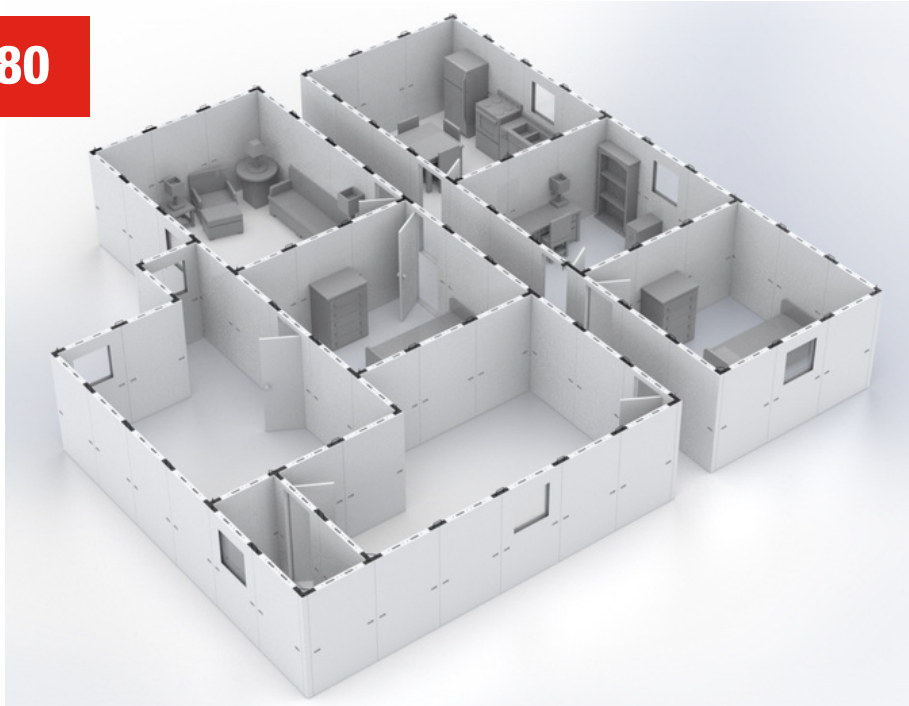
Quantity	Simunition Shoot House Component
32	Simulator Structure STANDARD Panel
4	Simulator Structure DOOR Panel
4	Simulator Structure WINDOW Panel
4	Connecting Bracket Package (one required for every 10 panels)
4	Corner Post
1	Support Arm Sets
1	Spanner Sets
1	Freight and Handling
1	Set-Up Tech Support and Training

Reconfigure each package for an endless amount of possibilities to suit your training needs

ALTERNATIVE LAYOUTS



Sim-Tact™ 80

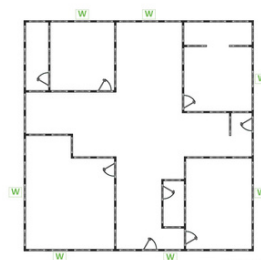
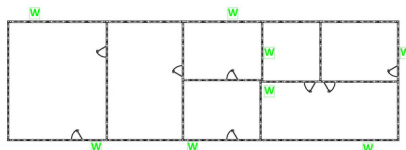


PACKAGE INCLUDES

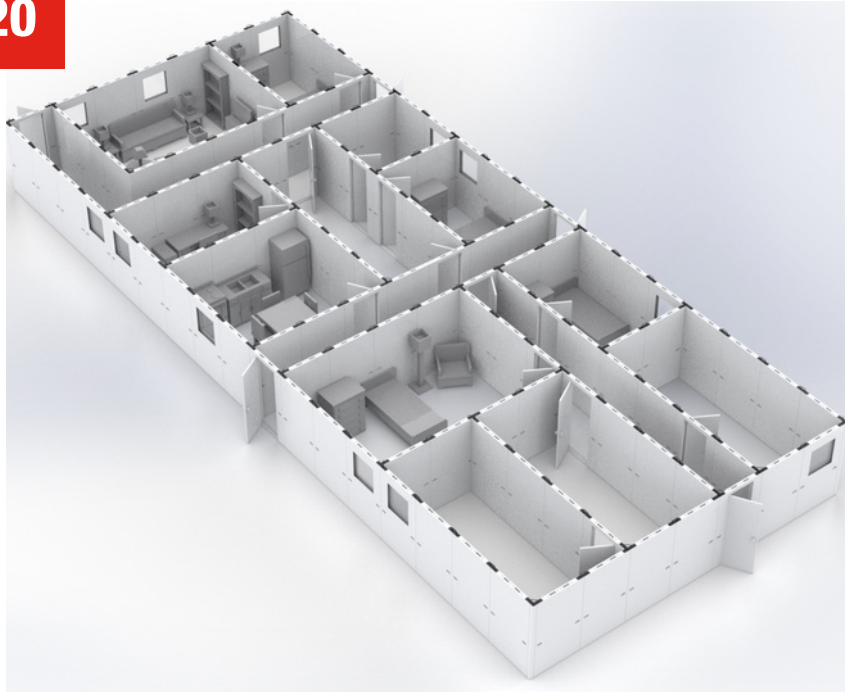
Quantity	Simunition Shoot House Component
64	Simulator Structure STANDARD Panel
8	Simulator Structure DOOR Panel
8	Simulator Structure WINDOW Panel
8	Connecting Bracket Package (one required for every 10 panels)
4	Corner Post
2	Support Arm Sets
2	Spanner Sets
1	Freight & Handling
1	Set-Up Tech Support and Training

Reconfigure each package for an endless amount of possibilities to suit your training needs

ALTERNATIVE LAYOUTS



Sim-Tact™ 120



PACKAGE INCLUDES

Quantity	Simunition Shoot House Component
90	Simulator Structure STANDARD Panel
18	Simulator Structure DOOR Panel
12	Simulator Structure WINDOW Panel
12	Connecting Bracket Package (one required for every 10 panels)
8	Corner Post
3	Support Arm Sets
3	Spanner Sets
1	Freight & Handling
1	Set-Up Tech Support and Training

Reconfigure each package for an endless amount of possibilities to suit your training needs

ALTERNATIVE LAYOUTS

