

HEPA Range Vacuuming Made Easy

CHARACTERISTICS:



Three Motors



HEPA - Included



High Efficiency



Dry Recovery



Detachable Tank



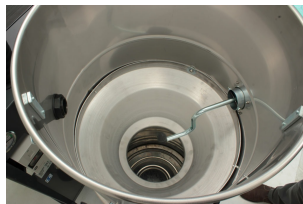
SS 304

- Great for large ranges
- 3 Motors: can be used individually or simultaneously
- Includes a Star Shaped Main Filter
- Manual Filter Shaker (MFS) system
- HEPA Filter with minimum efficiency of 99.995% on 0.3 Micron
- Filter chamber and recovery tank made of stainless steel Type 304.
- Detachable Recovery Tank (DT) for easy disposal of recovered materials
- Pressure gage and illuminated filter blockage indicator
- The 28"/71 cm Zamboni is ideal for larger surface areas and makes cleaning efficient

USE ONLY RECOMMENDED TOOLS & ACCESSORIES:



Side Mounted Manual Filter Shaker



Side Mounted Manual Filter Shaker (Internal View)



HEPA Filter Cartridge - Included



Tangential Suction Inlet, 70mm, Aluminum



Ø2" (Ø50mm) Static Conductive Tool Kit - Included



Conductive Star Shaped Filter with Cage for ORDLOC 652 -Included



SPECIFICATIONS:

MODEL NAME	TV-201 (DT) MFS HEPA ORDLOC-652
TYPE (POWERHEAD)	Electric
TEFC MOTOR	No
VOLTAGE	120V
HERTZ	60 Hz
PHASE	Single
WATTAGE	2400W
POWER	3.2 HP
AMPERAGE	15.8 amps.
AIR FLOW	270 CFM
VACUUM PRESSURE	71.5" H2O
SOUND LEVEL	70 dB(A)
PLUG TYPE	20 Amps
SUCTION INLET	70 mm
CART TYPE	Detachable Tank (DT)
FILTER CLEANING	Manual Filter Shaker (MFS)
DRY RECOVERY - TANK	10.5 Gal (40 L)
FILTER TYPE	Star Shaped + HEPA
FILTER SURFACE AREA	21 ft ² + 10.8 ft ²
LENGTH	29"
WIDTH	25"
WEIGHT (VACUUM ONLY)	122 lbs.
HEIGHT	44"
CORD LENGTH	30 ft.

**Please note that specifications are subject to change without notice*

DUST IGNITION PROTECTED CLASS II, DIVISION 2, GROUPS F AND G

ESD Safe Vacuum Cleaners for Hazardous Locations are designed to prevent ignition hazards. We use metal parts or Static Dissipative Powder Coating to prevent Electrostatic Discharge (ESD)

CHARACTERISTICS:



Detachable Tank



Dry Recovery



HEPA Filter



SS 304



High Efficiency



Dual Motor



Static Dissipating

- The most flexible industrial cleaning tool a firing range can use
- For housekeeping and general cleaning of firing ranges
- Can safely recover lead dust and unspent gunpowder
- Dual Bypass Ametek® long life motors
- Includes 5 HEPA filters. Class H14. Individually factory tested
- Stainless Steel Type 430 body and recovery tank.
- Manual Filter Shaker (MFS) with SD* Teflon Laminated Main Cloth Filter Assembly.
- Detachable Filter Chamber and Recovery Tank for easy disposal of contaminated recovered materials
- Material to be recovered within a conductive polyliner recovery bag for easy disposal
- Front mounted floor tool (28"/71 cm wide) is included
- The onboard sidekick hose & wand are designed to improve the overall cleaning efficiency resulting in improved productivity
- Ideal for cleaning along vertical surfaces, removing debris from cracks and crevices, stray small caliber casings and those difficult to reach nooks and crannies in the bullet trap Dual suction inlets
- with gate valves allow the operator to easily "shift and go" to switch from wide area floor cleaning to spot cleaning with our "sidekick" hose and wand



SPECIFICATIONS:

MODEL NAME	4D-35L EX DT MFS HEPA (FRP-SIDEKICK)
TYPE (POWERHEAD)	Electric
VOLTAGE	120V
HERTZ	60 Hz
PHASE	Single
WATTAGE	2040 W
POWER	2.7 HP
AMPERAGE	15.2 amps.
AIR FLOW	200 CFM
VACUUM PRESSURE	90" H2O
PLUG TYPE	20 Amps Explosion Proof
SUCTION INLET	Two x2"
CART TYPE	Detachable Tank (DT)
FILTER CLEANING	Manual Filter Shaker (MFS)
DRY RECOVERY - TANK	9.2Gal
CORD LENGTH	33 ft.

**Please note that specifications are subject to change without notice*

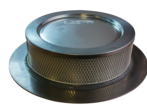
USE ONLY RECOMMENDED TOOLS & ACCESSORIES:



Detachable Filter Chamber and Recovery Tank for easy decontamination



Dual Suction Inlets with Gate Valves and Manual Filter Shaker (MFS)



HEPA Filter - Included



Main Cloth Filter and Cage, Static Dissipative - Included



Conductive Polyliner Recovery Bag - Included



SideKick Static Conductive Suction Hose, Wand and Conical Nozzle - Included