

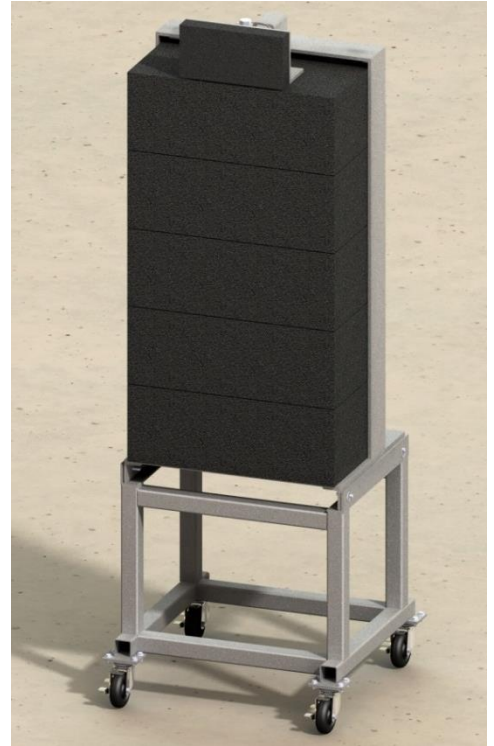


## Encapsulator™ 5-Bloc

Our Portable Encapsulator 5-Bloc Bullet Trap is made with the Range Systems signature ballistic rubber to capture rounds virtually intact, reducing the hazards of ricochet, splatter and lead particles. While all our bullet traps utilize proprietary Dura-Bloc™ and Dura-Panel™ ballistic rubber products, they are also made with the finest steel in the industry to provide the best in bullet containment and safety.

### Highlights

- Accommodates rounds with minimum velocities of 600 FPS up to a maximum of .308/7.62mm
- Defeats US Army 5.56 M855 Green Tip
- Encapsulator™ system features 3/8 inch AR500 steel back plate
- Dura-Panel™ 2 inch panel and Dura-Blocs™ ballistic rubber contain the rounds
- Proprietary compression system holds the Dura-Blocs™ in place
- Dura-Blocs can be rotated from high volume areas to extend life-cycle
- Tubular steel base features heavy-duty locking casters for mobility
- Four side handles assist with maneuvering the trap into location



### Specifications

Product Weight: 740 lbs.  
Dimensions: 79" h x 28" w x 26" d  
Shooting Surface: 24" w x 45" h

SKU #TP5003

### Optional Add-Ons

Dura-Panel Frontal Shield installed on the front of the base shields the frame and casters from errant rounds. The Full Frontal Shield is constructed of AR500 steel and Dura-Panel ballistic rubber and can be added to Encapsulator 5-Bloc and the 2.5D portable bullet trap models.

SKU #TP5028: Portable Encapsulator Frontal Shield

SKU #TP5034: Portable Encapsulator Full Frontal Shield



*The use of tracers or any other incendiary-type round is prohibited.*



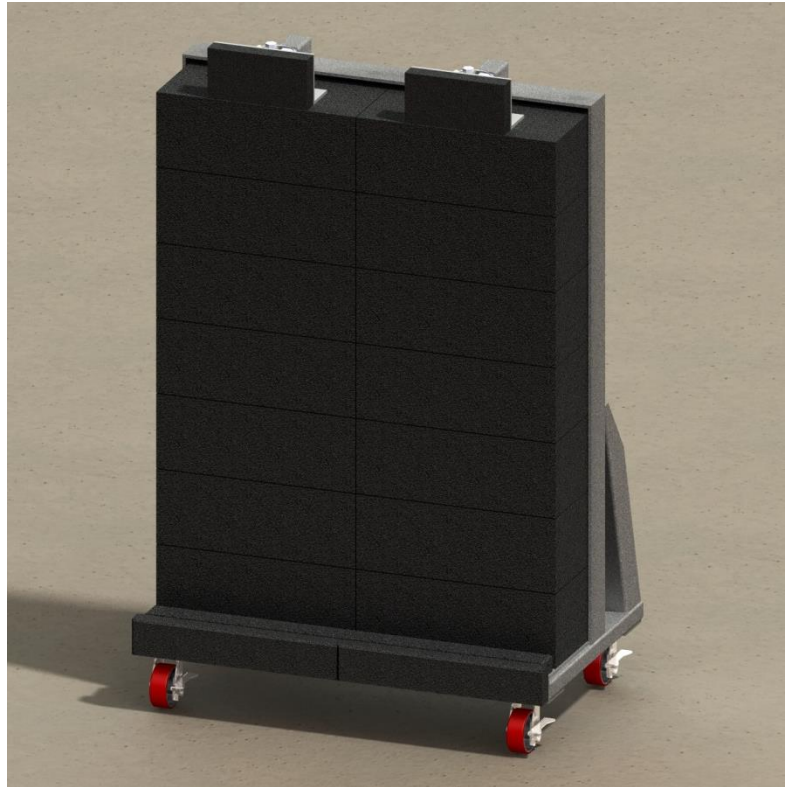


## Encapsulator™ 4 x 5

Range Systems 4' x 5' Portable Encapsulator™ bullet trap provides a large target area but is small enough to fit through a standard 36" doorway. The Encapsulator™ system is constructed of 3/8" AR500 steel back-plate covered with 2 inch Dura-Panel™ and finished with Dura-Blocs™. Two compression systems hold the Dura-Blocs™ securely in place to provide a 48"W x 60"H shooting surface. The lower front edge of the trap is covered with Dura-Panel™ for ballistic protection from misdirected rounds. The heavy-duty casters allow for easy mobility and the mounted hand brackets on the back of the trap assist with maneuvering.

### Specifications

Weight 1,940 lbs.  
Dimensions 78-3/4"H x 48"W x 32"D  
SKU #TP5015



## Encapsulator™ Bullet Trap Wall

This all-inclusive system is ideal for in-home ranges or small confined range areas. The Encapsulator™ Bullet Trap Wall captures rounds virtually intact, reducing the hazards of ricochet, splatter, and lead particles. Its self-healing properties seal the bullet's path after the round has penetrated the surface so each bullet is encapsulated inside the ballistic rubber block.

The wall trap includes our patented rubber composite products, proprietary compression plate system, 3/8" AR500 ballistic steel, and necessary structural components for a 4"W x 8"H bullet trap wall. Custom sizes and configurations are available.

### Specifications

Weight 2,272 lbs.  
Dimensions 96"H x 48"W x 14-3/4" D  
SKU #TW5006



## Encapsulator™ Mobile Range on Wheels

Provides a massive target surface area of 48"W x 96"H. Encapsulator™ system is constructed of AR500 steel back plate covered with 2 inch Dura-Panel™ and finished with Dura-Bloc™ ballistic rubber. Two compression systems hold the Dura-Blocs™ securely in place and the lower front edge of the trap is covered with Dura-Panel™ for ballistic protection from misdirected rounds. The heavy-duty swivel and locking wheels allow for easy mobility. For permanent placement, the wheels can be removed and the bullet trap can be floor mounted with the built-in mounting plates.

### Specifications

Weight 2,645 lbs.  
Dimensions 99"H x 48"W x 62"D  
SKU #TM6000



## Encapsulator™ Mobile Range Wall

Constructed of three 4' W x 8' H Encapsulator™ Mobile Range sections to provide a 12 foot wide by 8 foot high bullet trap. Sections are bolted together with our AR500 steel seam plates. The Encapsulator™ system is constructed of 3/8" AR500 steel back plate covered with 2 inch Dura-Panel™ and finished with Dura-Bloc™ ballistic rubber. Six compression systems hold the Dura-Blocs™ securely in place and the lower front edge of the trap is covered with Dura-Panel™ for ballistic protection from misdirected rounds. A concrete pad is recommended to support the wall.

### Specifications

Weight 7,935 lbs.  
Dimensions 99"H x 144"W x 62"D  
SKU #TM7000



## Encapsulator™ 2.5D Bloc Trap

The 2.5D Bloc Trap provides safe target engagement at acute angles up to 70 degrees without concern of ricochet or back-splatter, making it ideal for tactical training scenarios.

Accommodates rounds with minimum velocities of 600 FPS up to a maximum of .308/7.62mm and also defeats US Army 5.56 M1855 Green Tip.

The Encapsulator™ system features 3/8" AR500 steel back plate with 2 inch Dura-Panel™ covering and ballistic rubber Dura-Blocs™ with angled corners. An adjustable compression system holds the ballistic rubber blocks in place.

The tubular steel base features heavy-duty locking casters for mobility and two handles to assist with maneuvering it into place. Shooting surface area is 24"w x 44"h.

### Specifications

Weight            700 lbs.  
Dimensions      79"H x 28" W x 26" D  
SKU# TP5018



## Tactical Trap

The Tactical Trap is constructed of AR500 steel back plate with 2" wide ballistic steel edges and faced with 2" thick Dura-Panel™ ballistic rubber surface. The trap features a LOK-TITE™ mounting system which allows it to be securely fastened to a stand or wall-mounted. For easy set-up, simply hook the back of trap to the stand or to the wall-mount fixture using the LOK-TITE™ system – no other assembly is required. When mounted to the stand, the lower edge of the shooting surface is 34" off the floor.

1/2" AR500 Steel Back Plate accommodates calibers up to 300 Win Mag rounds and .338 Lapua, 250 grain FMJ

*Heavy-duty casters are optional (SKU #HC5000)*



## Specifications

H-Stand stand base is 30 3/8" W x 30" D  
Overall unit height of trap mounted on the stand is 70 - 1/4"  
Weight on stand: 269 pounds  
SKU# TP5024



## Super Tactical Trap

The Portable Super Tactical Trap provides a 36" w x 48" h shooting area with the lower edge of the shooting surface 19 1/2" off the floor.

Constructed of AR500 steel back plate with 2" wide ballistic steel edges and faced with 2" thick Dura-Panel™ ballistic rubber surface. The trap features dual LOK-TITE™ mounting brackets to allow it to be securely fastened to the sturdy two-post mounting stand. Lift handles on the back of the trap assist in positioning the trap onto the stand.

## Specifications

Two post stand base is 56" W x 30" D  
Overall unit height of trap mounted on the stand is 68"  
Weight on stand: 528 pounds  
SKU# TP5038



## Lead Recovery Bullet Trap

The Lead Recovery Bullet Trap employs an air-gap design that captures rounds without ricochet or back-splatter and allows the spent bullets to be recovered for proper handling.

Range Systems patented Dura-Panel™ ballistic rubber is layered with a polymer panel to create a self-healing membrane that covers the front of the bullet trap. Rounds pass through the membrane, strike the AR500 steel back impact plate, and are captured in lead collection trays. The side-mounted lead collection trays allow for easy access to the spent rounds for removal and proper disposal.

- Rated for pistol rounds, 5.56 SRTA/SS109/M193 and 7.62 M80/M52 rounds
- Not intended for use with hollow point ammunition
- Rubber membrane accommodates a minimum of 1,000 rounds
- Stand mounted with rolling casters for portability
- Small footprint makes it ideal for shoot house and tactical training environments
- Free-standing and wall-mount models available
- 24" x 48" shooting surface

## Specifications

Weight 633 pounds  
Dimensions 78" H x 25.5"W  
H-Stand Base 30" H x 30" W  
SKU #TP5052



## 50 BMG Bullet Trap

The 50 BMG Bullet Trap accommodates rounds with minimum velocities of 600 FPS up to and including the 50 caliber BMG round. Built with AR500 steel, the BMG Bullet Trap utilizes chunk ballistic rubber material to safely stop and contain bullets. The front opening cover is self-healing to ensure rounds are confined inside the trap and to provide a durable surface. The tubular steel base features heavy-duty locking casters for mobility and handles to assist with maneuvering it into place. The 50 BMG Bullet Trap is built to last and will capture thousands of rounds before any maintenance is required.

## Specifications

Weight 1,076 pounds  
Dimensions 64"H x 27.5"W x 38.75"D  
Shooting Surface 35"H x 25"W

SKU #TP5061



## Portable Encapsulator™ Gran Trap



The Portable Encapsulator™ Grantrap is designed for high volume shooting and captures rounds without back-splatter or ricochet. It is rated for standard grade .308/7.62mm ammunition. The depth of the rubber granular material is 24" and fills the support frame to stop and contains bullets virtually intact, reducing the hazards of ricochet and splatter. The shooting surface is inclined to the direction of incoming rounds and Dura-Panel™ ballistic rubber with 3/8" AR500 steel plate back forms the front edge of the trap to confine the rubber granulate fill and capture misdirected rounds. Removable wheels allow the trap to be mobile or it can be bolted to the floor with the built-in mounting plates for a more permanent placement. The use of tracers or any other incendiary-type round is prohibited.

### Specifications

Weight 2,000 lbs.  
Dimensions 78"H x 49"W x 100"D  
Shooting surface area 48"W x 96"L

SKU #TM5007



Rubber granulate fill

## 5 Things to Consider When Choosing a Portable Bullet Trap

- 1) What calibers are going to be fired into your portable trap?
- 2) What is the expected volume of rounds that will be fired?
- 3) Do you plan to recover the lead from the trap?
- 4) Is this trap going to be used indoors or outdoors?
- 5) How is the trap going to be used?

While there are many factors to consider when evaluating which portable bullet trap is right for your needs, these 5 things are some of the more important issues. Range Systems has a vast array of portable bullet traps to offer and will help you take the guesswork out of selecting the right one for your application.