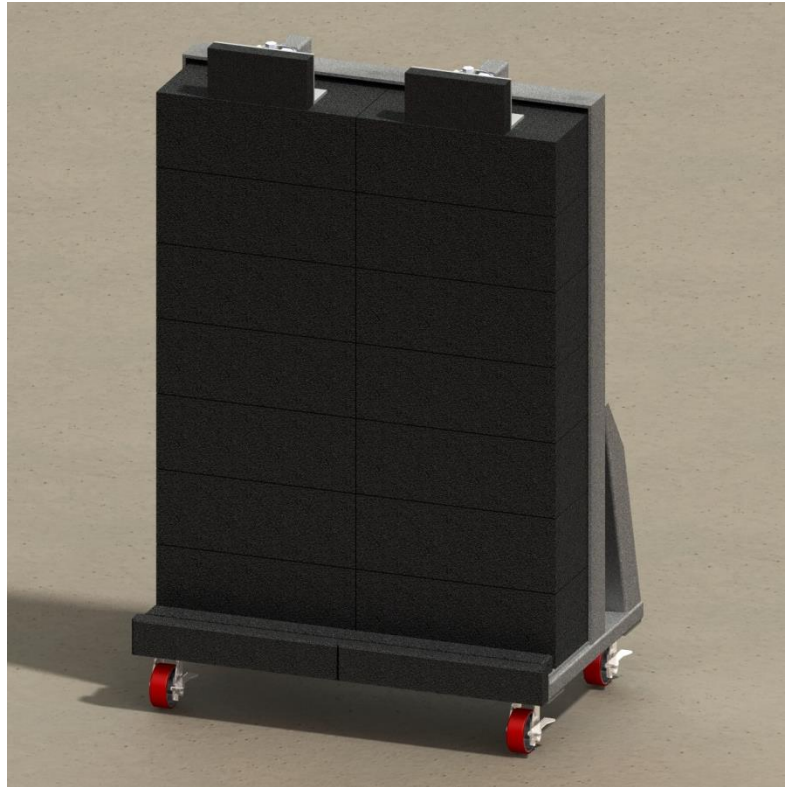




## Encapsulator™ 4 x 5

Range Systems 4' x 5' Portable Encapsulator™ bullet trap provides a large target area but is small enough to fit through a standard 36" doorway. The Encapsulator™ system is constructed of 3/8" AR500 steel back-plate covered with 2 inch Dura-Panel™ and finished with Dura-Blocs™. Two compression systems hold the Dura-Blocs™ securely in place to provide a 48"W x 60"H shooting surface. The lower front edge of the trap is covered with Dura-Panel™ for ballistic protection from misdirected rounds. The heavy-duty casters allow for easy mobility and the mounted hand brackets on the back of the trap assist with maneuvering.

Weight 1,940 lbs.  
Dimensions 78-3/4"H x 48"W x 32"D  
SKU #TP5015



## Encapsulator™ Bullet Trap Wall

This all-inclusive system is ideal for in-home ranges or small confined range areas. The Encapsulator™ Bullet Trap Wall captures rounds virtually intact, reducing the hazards of ricochet, splatter, and lead particles. Its self-healing properties seal the bullet's path after the round has penetrated the surface so each bullet is encapsulated inside the ballistic rubber block.

The wall trap includes our patented rubber composite products, proprietary compression plate system, 3/8" AR500 ballistic steel, and necessary structural components for a 4'W x 8'H bullet trap wall. Custom sizes and configurations are available.

Weight 2,272 lbs.  
Dimensions 96"H x 48"W x 14-3/4" D  
SKU #TW5006





## Encapsulator™ Mobile Range on Wheels

Provides a massive target surface area of 48"W x 96"H. Encapsulator™ system is constructed of AR500 steel back plate covered with 2 inch Dura-Panel™ and finished with Dura-Bloc™ ballistic rubber. Two compression systems hold the Dura-Blocs™ securely in place and the lower front edge of the trap is covered with Dura-Panel™ for ballistic protection from misdirected rounds. The heavy-duty swivel and locking wheels allow for easy mobility. For permanent placement, the wheels can be removed and the bullet trap can be floor mounted with the built-in mounting plates.

Weight 2,645 lbs.  
Dimensions 99"H x 48"W x 62"D  
SKU #TM6000



## Encapsulator™ Mobile Range Wall

Constructed of three 4' W x 8' H Encapsulator™ Mobile Range sections to provide a 12 foot wide by 8 foot high bullet trap. Sections are bolted together with our AR500 steel seam plates. The Encapsulator™ system is constructed of 3/8" AR500 steel back plate covered with 2 inch Dura-Panel™ and finished with Dura-Bloc™ ballistic rubber. Six compression systems hold the Dura-Blocs™ securely in place and the lower front edge of the trap is covered with Dura-Panel™ for ballistic protection from misdirected rounds. A concrete pad is recommended to support the wall.

Weight 7,935 lbs.  
Dimensions 99"H x 144"W x 62"D  
SKU #TM6000



## Encapsulator™ 2.5D Bloc Trap

The 2.5D Bloc Trap provides safe target engagement at acute angles up to 70 degrees without concern of ricochet or back-splatter, making it ideal for tactical training scenarios.

Accommodates rounds with minimum velocities of 600 FPS up to a maximum of .308/7.62mm and also defeats US Army 5.56 M1855 Green Tip.

The Encapsulator™ system features 3/8" AR500 steel back plate with 2 inch Dura-Panel™ covering and ballistic rubber Dura-Blocs™ with angled corners. An adjustable compression system holds the ballistic rubber blocks in place.

The tubular steel base features heavy-duty locking casters for mobility and two handles to assist with maneuvering it into place. Shooting surface area is 24" w x 44" h.

Weight 700 lbs.  
Dimensions 79" H x 28" W x 26" D  
SKU# TP5018

## Encapsulator™ 3-Bloc Trap

Accommodates rounds with minimum velocities of 600 FPS up to a maximum of .308/7.62mm and also defeats US Army 5.56 M1855 Green Tip. The Encapsulator™ 3-Bloc system features 3/8" AR500 steel back plate with 2 inch Dura-Panel™ covering and Dura-Blocs™ ballistic rubber blocks to provide a 24" w x 27" h shooting surface. The tubular steel base features swivel casters for mobility.

Weight 466 lbs.  
Dimensions 56" H x 28" W x 26" D  
SKU #TP5013

**Option:** As shown, a front shield can be added to an Encapsulator Bullet Trap stand to provide protection from errant shots.

SKU#TP5028

